

JONES JOURNEY



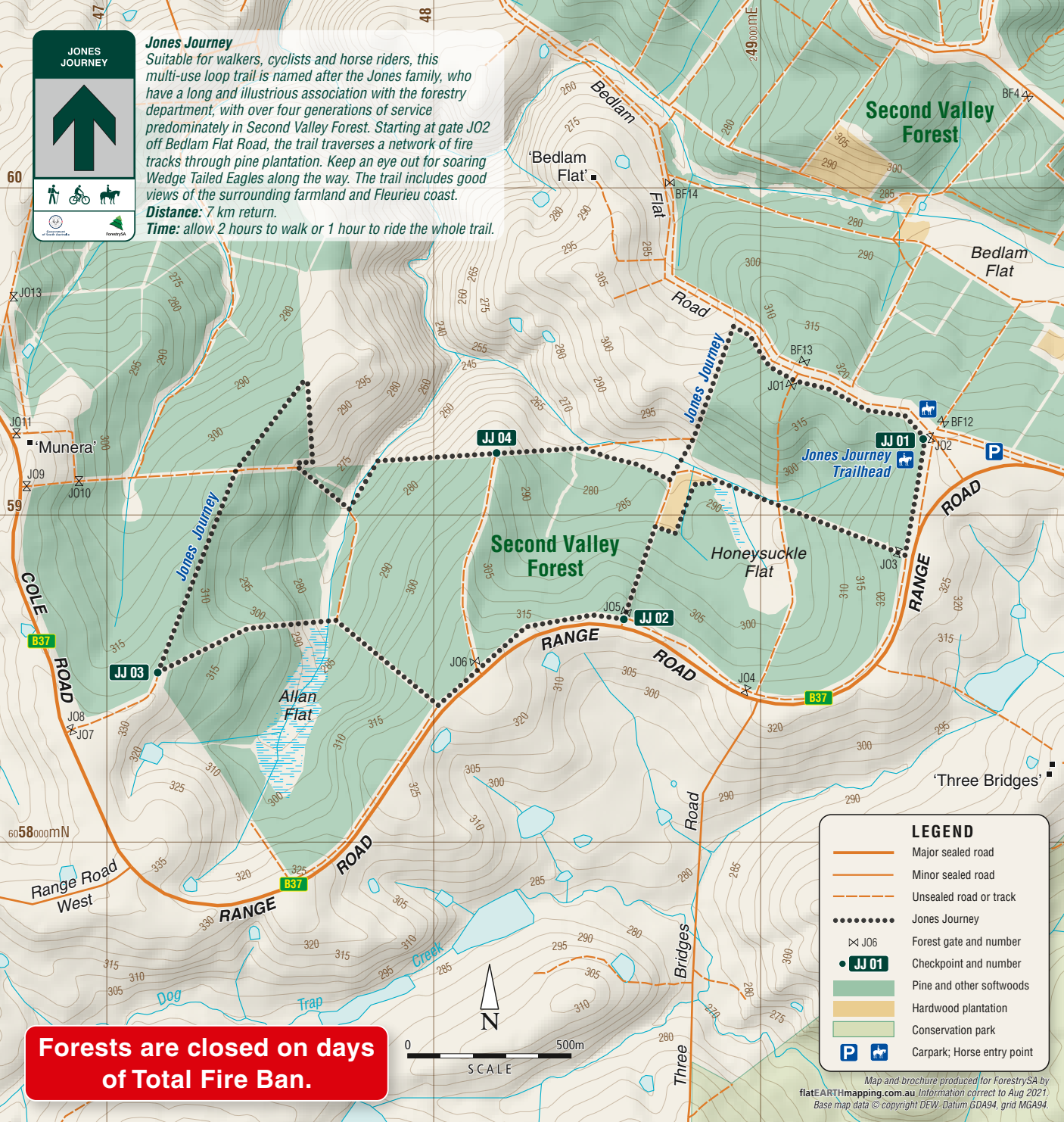


Jones Journey

Suitable for walkers, cyclists and horse riders, this multi-use loop trail is named after the Jones family, who have a long and illustrious association with the forestry department, with over four generations of service predominately in Second Valley Forest. Starting at gate J02 off Bedlam Flat Road, the trail traverses a network of fire tracks through pine plantation. Keep an eye out for soaring Wedge Tailed Eagles along the way. The trail includes good views of the surrounding farmland and Fleurieu coast.

Distance: 7 km return.

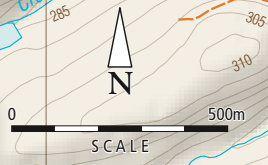
Time: allow 2 hours to walk or 1 hour to ride the whole trail.



LEGEND

-  Major sealed road
-  Minor sealed road
-  Unsealed road or track
-  Jones Journey
-  Forest gate and number
-  Checkpoint and number
-  Pine and other softwoods
-  Hardwood plantation
-  Conservation park
-  Carpark; Horse entry point

Forests are closed on days of Total Fire Ban.



Map and brochure produced for ForestrySA by flatEARTHmapping.com.au Information correct to Aug 2021. Base map data © copyright DEW, Datum GDA94, grid MGA94.