

Inman Valley was surveyed in sections of about 80 acres each were made available for sale in early 1850. Originally known as "PugTown" for the many homes in the area built with "wattle and daub" consisting of 2 - 4 rooms. The valley has been home to orchards and farming over the years, and continues to thrive as a strong community within the Fleurieu Coast.

Printed by Inman Valley Presents as part of the History Festival 2022.

For further information into sources please contact through:

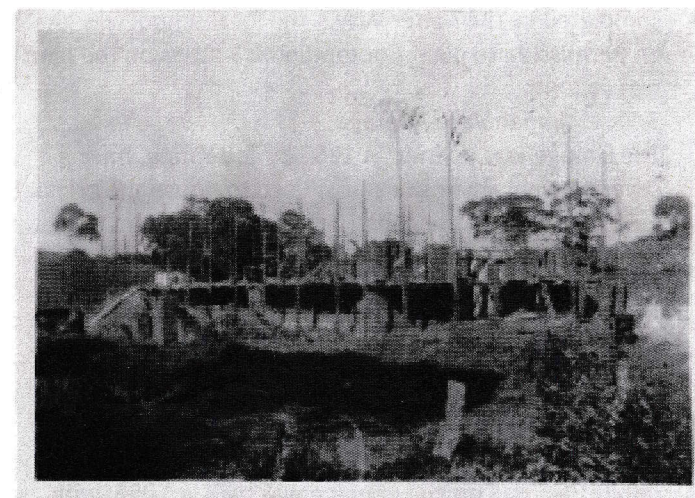
Facebook:
Inman Valley Community & Memorial Hall
Inman Valley Presents

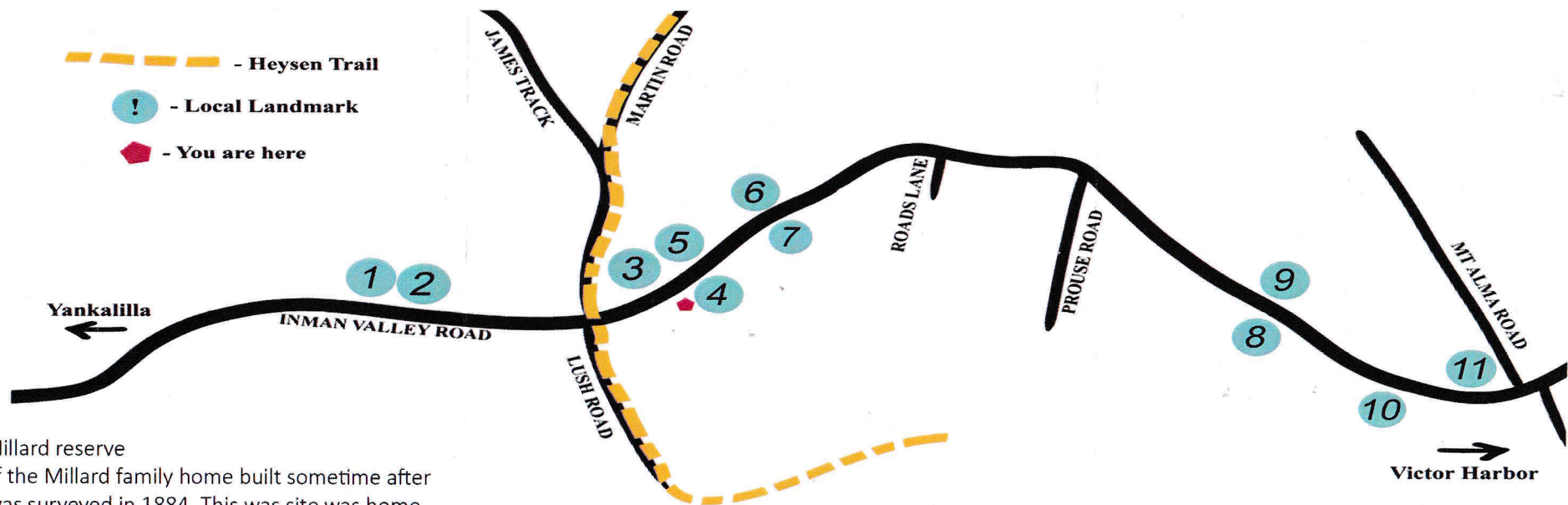
Email:
IVMEMORIALHALL@gmail.com

Phone:
08 8558 8242

1713 Inman Valley Rd,
Inman Valley

Inman Valley Township Historical Walk





1. Millard reserve

The site of the Millard family home built sometime after the land was surveyed in 1884. This site was home to W.G Millard who lived in the house for over 86 years. The land is now a site to recognise one of the areas founding families.

2. Tennis club

The formation of the Inman Valley Tennis club took place in 1904 with the construction on one court and in 1905 a shelter shed close by. Consisting of dirt courts till 1910 when the first coats of asphalt went down. This site was completed in 1947 after WW2, the local school was given permission to plant Cootamundra wattles on the land.

3. Inman Valley Garage

The Garage was opened in 1952 by Ted Young, having several owners over the years. Used to house the original E.F.S unit prior to the construction of the present dedicated site. The garage continues to operate under long term ownership.

4. Memorial Hall

The foundation stones of the Inman Valley Memorial Hall were placed in August 1954, the hall was built by the community, on land originally owned by the Hurrell family. The Hall official opening was held in 1955, with "Dancing continuous from 8pm to midnight".

5. Inman Valley General Store

Opened on 7th April 1952 by V. Grimm the store has changed hands several times. At one stage the store was home to the post office and petrol, with the addition of a licensed café in the early 80s. The store contains some of the original structure but continues to change and expand.

6. Church

The opening of this church took place in 1871 when a Miss Thorn preached to an overflowing congregation. The building was in part constructed with stones from the dismantled Bald Hills Chapel. With the latter additions of the T end in 1906, and porch in 1937 with Memorial Window to the pioneers.

7. Old School House

The present school residence was built in 1886, with the old school room being converted into a library after the construction of the wooden classroom in 1954. The site also includes a residence and toilet blocks. When the school closed at the end on 1970 the remaining students were transferred to Victor Harbor. Currently the property is owned by artist Ian McGrath.

8. Orange Grove Tea Rooms

Elizabeth Martin, in 1923 opened a shop and tearooms in a large room with a dwelling attached, with a large crowd attending the opening. This became the site of many social functions as well as serving meals and teas. The remaining steps up the bank surrounded by shrubs can still be seen.

9. Springrove- The original post office

Unable to say when the house was built by Richard Martin, but earliest records show a marriage recorded at the property in December 1855. It has been unoccupied since 1965 when it was owned by Florence Hunt, the younger sister of Elizabeth Martin. The National Trust deemed it a place of historic interest in 1981.

10. St Thomas Church

Built in 1885 of corrugated iron, it was originally a school during the week and Anglican church of a weekend. When closed it was transported and is used as an exhibit at the Yankalilla District Historical Museum

11. Selwyns Rock – Glacier Rock

The Glacier Rock, also known as Selwyns Rock is a 500-million-year-old boulder transported to this spot by glacial movements. Discovered in 1859 by ARC Selwyn, the rock is known as one of the largest glacial exposures in the world. The Glacier Rock Tea Rooms were built in 1959